



INDUSTRIAL FLUID POWER COMPONENTS
AND SYSTEMS

E12 & E16 SERIES

Electric Actuated Ball Valves



E12-DKBV-8FP-12D



E16-DKBV-16FP-110A

Standard Features

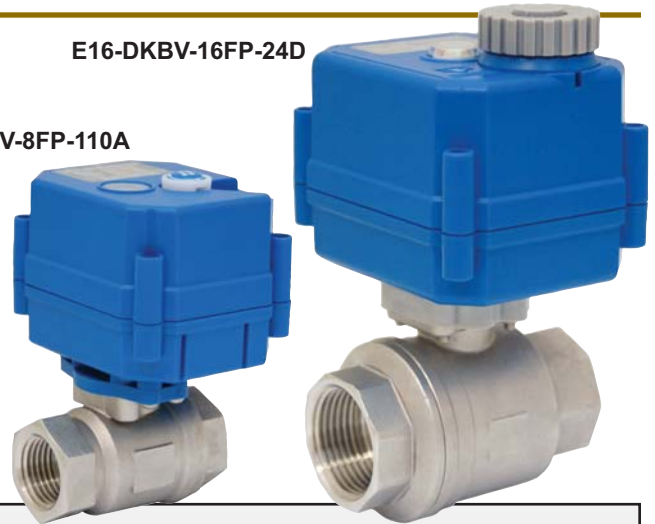
- 12/ 24VDC & 110VAC Voltage Available
- Double Acting
- Manual Override is Safe and Easy
- Mini Dimension Suited for Small Equipment
- Long Service Life- 70,000 - 100,000 Cycles
- Low Working Current
- Patented Technology- Floating Seal Structure
- For Indoor Use Only

Applications

- HVAC
- Water Treatment Industry
- Chemical Process
- Pharmaceutical Equipment
- Cleaning Equipment

E16-DKVB-16FP-24D

E12-DKVB-8FP-110A



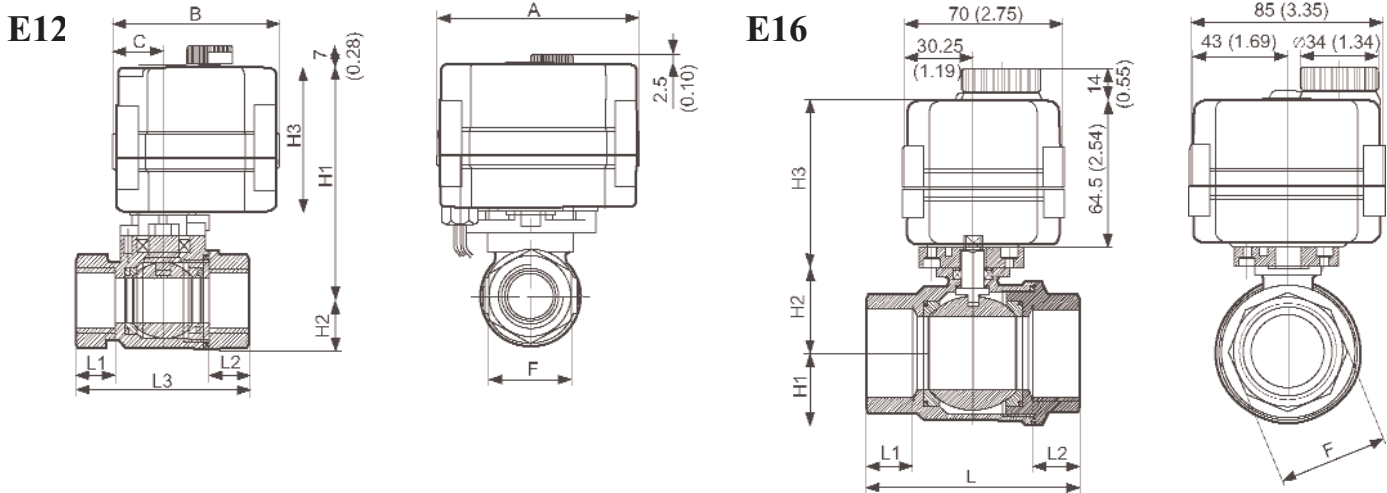
Notes

Once opened or closed, the actuator ***DOES NOT*** continue to draw power due to an internal cutoff.

If a power loss occurs the valve will remain in its current position. The actuator is ***NOT*** spring return.

Dimensional Data

Units: mm (inches)



E12	SIZE	L1/L2	L3	F	A	B	C	H3	H2	H1	Wt kg (lb)
	1/2"	13 (0.51)	57 (2.24)	27 (1.06)	66.5 (2.62)	54.5 (2.15)	16.3 (0.64)	48 (1.89)	16.5 (0.65)	77 (3.03)	0.37 (0.82)
	3/4"	16 (0.63)	70 (2.75)	32 (1.26)	66.5 (2.62)	54.5 (2.15)	16.3 (0.64)	48 (1.89)	21.5 (0.85)	81 (3.19)	0.52 (1.15)

E16	SIZE	F	H1	H2	H3	L1/L2	L	Wt kg (lb)
	1"	38 (1.50)	26.7 (1.05)	33.5 (1.32)	73 (2.87)	18 (0.71)	80 (3.15)	1.0 (2.20)
	1-1/4"	48 (1.89)	31.5 (1.24)	37.5 (1.48)	73 (2.87)	20.2 (0.80)	93 (3.66)	1.4 (3.09)

Technical Data

Series	Control	Max. Torque	Operating Time	Working Voltage	Input Power	Max. Pressure	Medium Temp.	Ambient Temp.
E12	On/ Off	2Nm (17.7 in/lbs)	5 - 7S	12/ 24VDC &	4 Watts Max.	1.6 Mpa (232 psi)	0°C to 100°C (32°F to 212°F)	-20°C to 45°C (-4°F to 113°F)
				110VAC	5 Watts Max.			
E16		10Nm (88.5 in/lbs)	7 - 10S	12/ 24VDC &	20 Watts Max.			
				110VAC				

IP67 Enclosure Duty Cycle: 10%

Manual Override

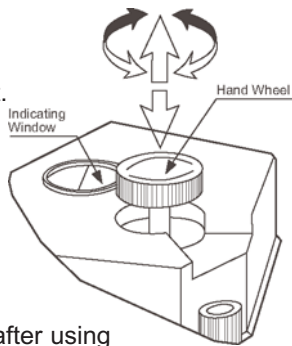
E12

1- Manual override is only permitted when power is cut.

2- Lift the hand-wheel, and turn it left or right until the valve is in place.

3- When the line on the indicator is horizontal, the valve is on; when vertical, the valve is off.

4- Press down hand-wheel after using manual override in order to work properly when power is supplied.



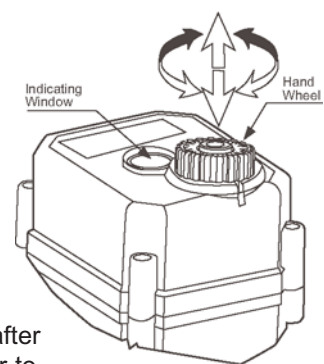
E16

1- Manual override is only permitted when power is cut.

2- Press down the center button, and turn it left or right until the valve is in place.

3- When the line on the indicator is horizontal, the valve is on; when vertical, the valve is off.

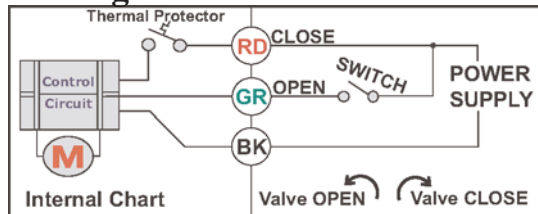
4- Press down center button after using manual override in order to work properly when power is supplied.



Main Components

Part	Material
Actuator Housing	ABS
Valve Body	Stainless Steel
Valve Ball	Stainless Steel
Stem	Stainless Steel
Ball Seat	PTFE
Seal	EPDM

Wiring



Instructions:

- If Switch is closed, the valve will open.
- If Switch is opened, the valve will close.

Ordering Information

E 12 - DKBV - 12 FP - 110A

